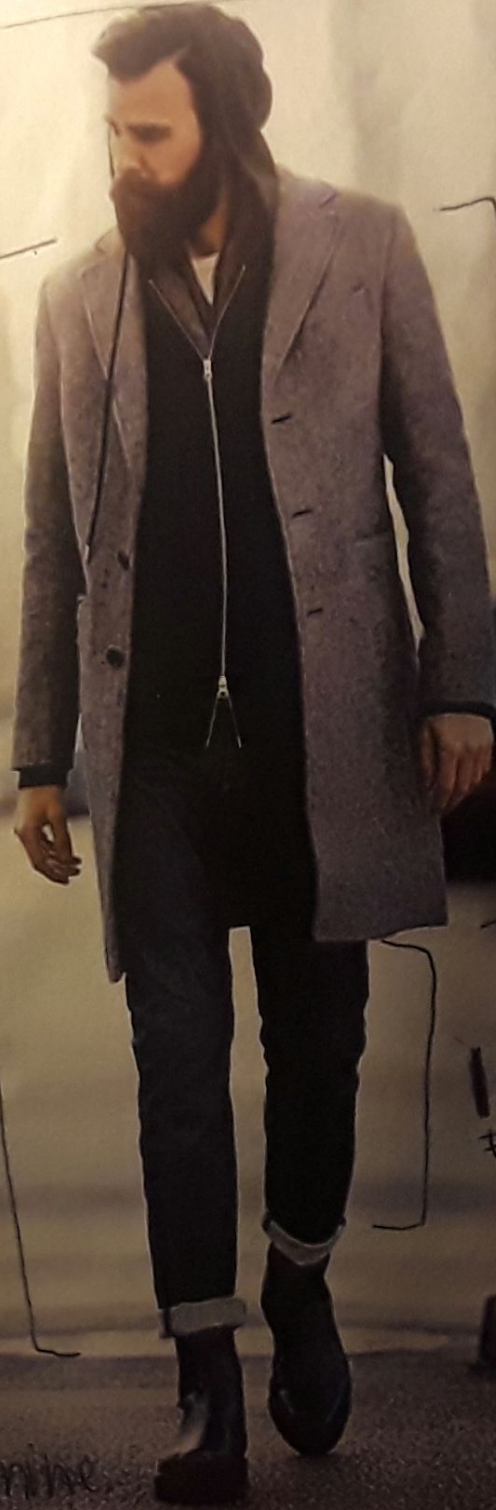


Local Value & VARIATIONS

MODEL

- Today we learned to find the local values of this model. We also get to find the variations.
- The main goal was to get two solid shapes & find their local value.
- I chose the coat and the jeans to find my local values.
- Then I used the value finder to determine what percentage each local value was at.
- My focus on the coat was to get a complete full shape that was not so easy & not so tough/difficult.
- My focus on the jeans seemed simpler because it is in the range of a black color & was easy to determine.



50%
#5

100%
#8

LOCAL VALUE VARIATIONS

15



Tracing - For the module outfit, I traced it to get my two simple shapes, which are the:
- coat
- jeans
- Not much to tracing it but it helps to trace for the local values.

Local values 1 - so, in the first local value, I have to determine the average value which is ranged at $\leq 0\%$. It is between a medium gray & a medium dark gray. In result, my two local values were a medium gray & a lighter, but still dark black, which is ranged at 100% .

Local values 1



Local values 1

16

LOCAL VALUE

AND

VARIATIONS



Local values 2

variations

VARIATIONS:

- Variations is using a range of different qualities or instances of an art element to create a desired visual effect.
- A variety of shapes, colors, shades, etc.
- My focus for my variations was on the coat because my model's coat consisted of various variations.
- As you see on the image, much highlights & shading was applied to make the full visual concept of the coat.